



Limited Circumstances Where a Person Ages 18 through 21 May Receive Division Services

Division of Developmental Disabilities

Nkechi Okoli
Statewide Director,
Office Transition to Adult Life & Employment
Division of Developmental Disabilities

Division of Developmental Disabilities

A Division of the NJ Department of Human Services

Mission

DDD assures the opportunity for individuals with developmental disabilities to receive quality services and supports, participate meaningfully in their communities and exercise their right to make choices.

Who Does DDD Serve?

To be eligible for DDD services a person must:

- Have an intellectual and/or developmental disability that began before age 22 and is expected to be lifelong
- Be age 21* or older
- Be a legal U.S. citizen and resident of New Jersey
- Be eligible for Medicaid
- Meet the functional criteria for a developmental disability

Medicaid Based Fee For Service System

- All individuals must be Medicaid eligible (and maintain Medicaid eligibility)
- All individuals will be on a waiver that provides funding for home & community-based services
 - Supports Program (**SP**)
 - Community Care Program (**CCP**)*
- Providers are Medicaid/DDD approved providers

*ICF/ID Level of Care

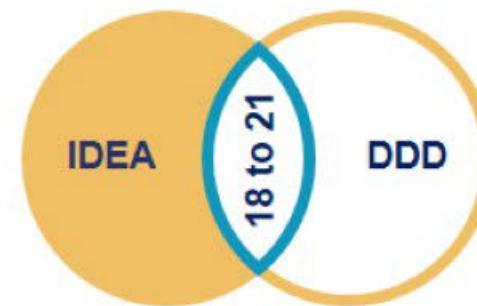
An Intermediate Care Facilities for Individuals with Intellectual Disabilities (ICF/IDD) Level of Care means that, without the home and community-based services provided through the Community Care Program, individuals would need to live in an institution.

Division of Developmental Disabilities

A Division of the NJ Department of Human Services
Office of Transition to Adult Life & Employment



Individuals with Disabilities Education Act (IDEA)



- Ensures Free Appropriate Public Education (FAPE) for children with disabilities ages 3-21.
- Entitlement-based; services provided upon identification of a disability.
- No eligibility process beyond the identification of a disability; services are automatically provided.
- Services through IDEA conclude when the student graduates or reaches the age of 21.

Individualized Education Program (IEP)

- Students are entitled to receive the special education and related services identified through their Individualized Education Program (IEP), as determined by the IEP team.
- The IEP contains goals aligned with:
 - academic achievement, and
 - behavioral and functional performance, as well as
 - post-secondary goals related to training, education, employment and, if appropriate, independent living.

*The local educational agency (LEA) is responsible for ensuring all services are provided at no cost to the student or parents.

Local Education Agency (Your Local School)

- Additional services that may be available to you will still in school include:
 - Accessing Pre-ETS services through the Division of Vocational Rehabilitation Services (DVRS).
 - Employment Training Programs like Project SEARCH

Parents Rights in Special Education



Angelica Allen-McMillan, Ed.D.
Acting Commissioner

Kathy Ehling, Esq.
Assistant Commissioner
Division of Educational Services

Kimberly Murray
Director
Office of Special Education

New Jersey Department of
Education PO Box 908
Trenton, New Jersey 08625-0908
(609) 375-9000
www.nj.gov/education/parents
PTM 1506.13

New Jersey Department of Education



Parental Rights in Special Education

Revised May 2023

SPAN Parents Advocacy Network

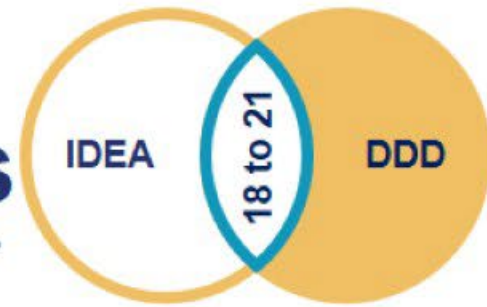
- There are also organizations in New Jersey, such as the SPAN Parent Advocacy Network and The Arc of New Jersey Family Institute, that can assist families with children who receive special education and related services if you have questions about the IEP process.

PerformCare

- Organization through the Children's System of Care (CSOC)
- Provides supports and service for individuals through the age of 21
- Some services may include:
 - Behavioral Health
 - Intellectual & Developmental Disabilities
 - Substance Abuse Treatment

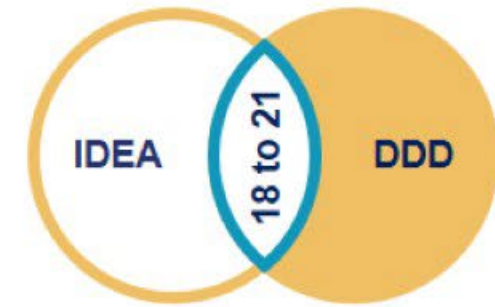
Contact PerformCare:
1-877-652-7624
www.performcarenj.org

Division of Developmental Disabilities



- Eligibility-based (individual must meet eligibility criteria and apply for services).
- Based on Tier, individual can select from a menu of available services.
- Services are available only for individuals who have been determined eligible.

Services Available Through DDD

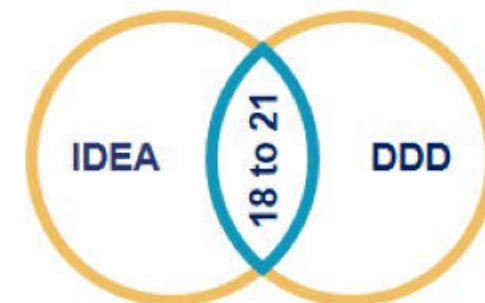


- Assistive Technology
- Behavioral Supports
- Career Planning
- Cognitive Rehabilitation (SP only)
- Community Based Supports (SP only)
- Community Inclusion Services
- Community Transition Services (CCP only)
- Day Habilitation
- Environmental Modifications
- Goods & Services
- Individual Supports (CCP only)
- Interpreter Services
- Natural Supports Training
- Occupational Therapy
- Personal Emergency Response System (PERS)
- Physical Therapy
- Prevocational Training
- Respite
- Speech, Language, and Hearing Therapy
- Supported Employment
- Supports Brokerage
- Transportation
- Vehicle Modifications

Transition from the School System to Adult Service System

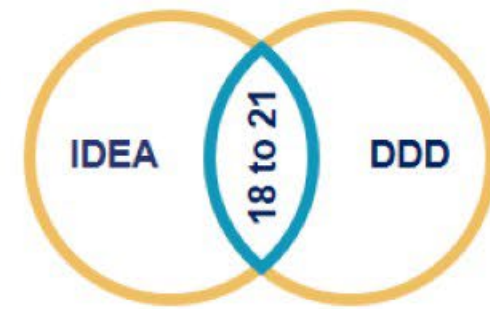


Limited Circumstances Where a Person Ages 18 through 21 May Receive Division Services



- Met both graduation requirements and the goals in their Individualized Education Program (IEP) and are not eligible to remain in high school until age 21.
- Seeking services from DDD that would not otherwise have been the responsibility of their LEA to provide.

Limited Circumstances Where a Person Ages 18 through 21 May Receive Division Services cont.



- An individual, if eligible for Division services, may be eligible to enroll in the Division as early as the age of 18 if they have graduated and are seeking Division services to:
 - Support immediate enrollment at an institute of higher education or trade school not funded by the Division of Developmental Disabilities; and/or
 - Support established competitive integrated employment.

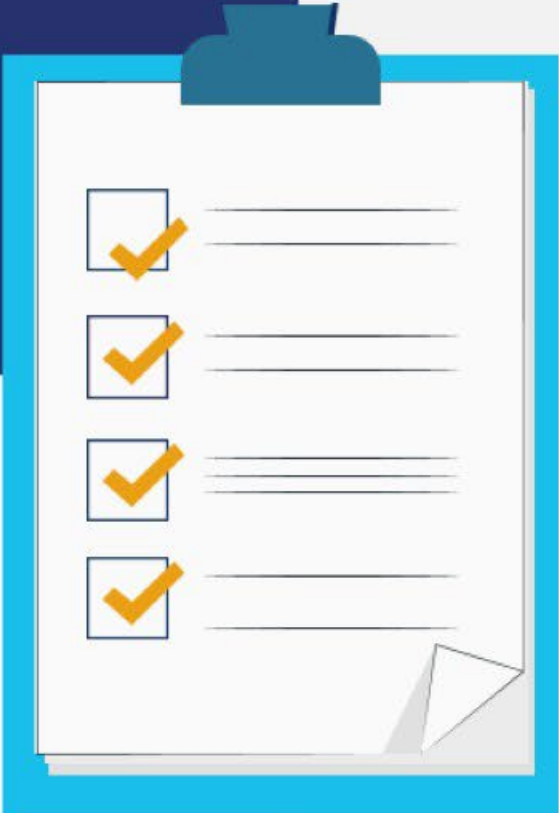
Steps to Take Prior to Accepting Your Diploma

Considerations

- As you plan for the transition from the school system to accessing adult services you may want to consider:
 - What will your day to day activities look like outside of class or employment?
 - What services are you seeking access to through DDD?

(Please note: early enrollment in DDD services is not intended for individuals to enroll in a Division-funded adult day habilitation program or services that would otherwise have been the responsibility of their LEA to provide)

Complete the Checklist



Review IEP

Ensure services available through LEA have been exhausted.



Obtain Adult Medicaid

Ensure that Adult Medicaid has been obtained.



Participate in Options Counseling

Participate in DDD Options counselling at least 6 months prior to anticipated graduation.



Early Enrollment Eligibility Confirmation

Must submit required information in order to be reviewed for early enrollment.



Complete DDD Eligibility Process

Complete DDD Eligibility Process at 18

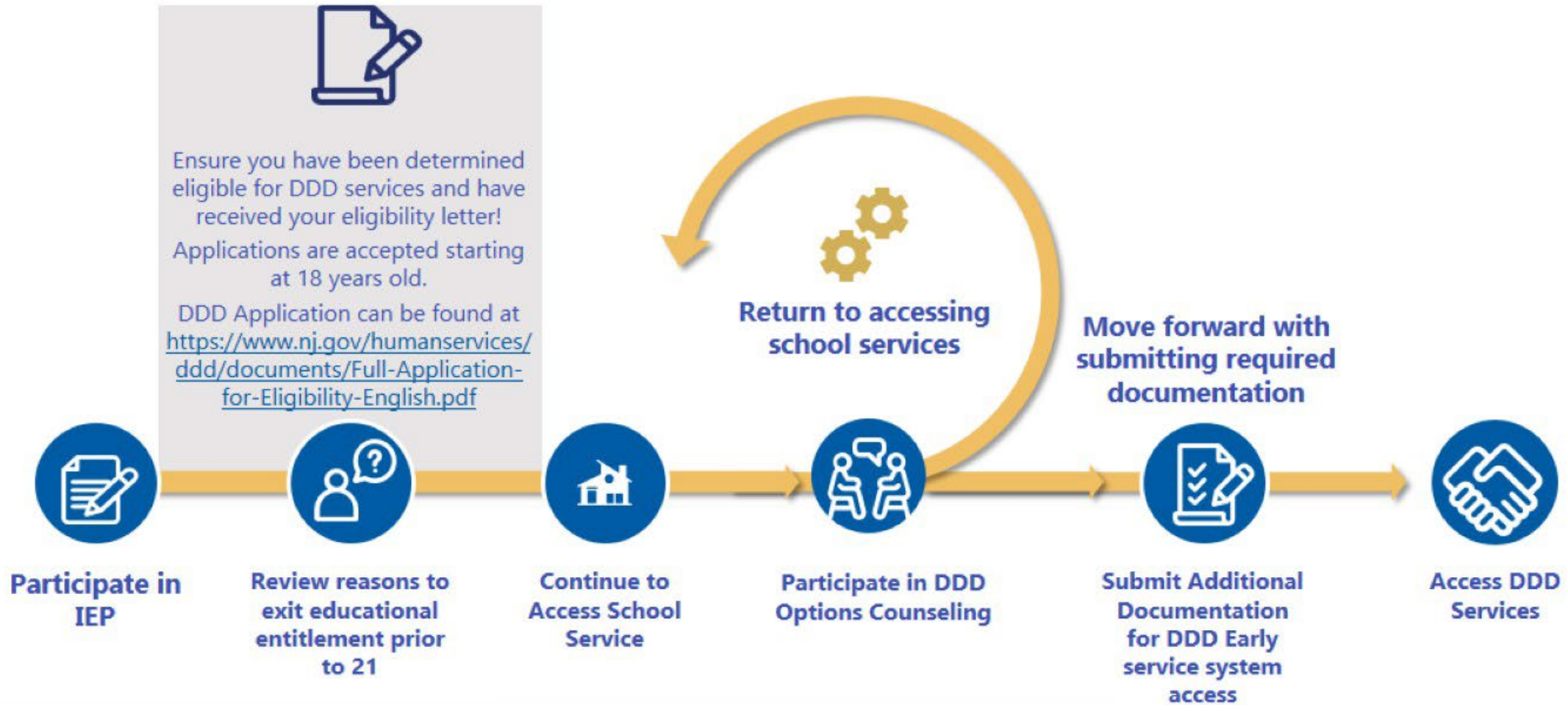
Documentation Requirements for Early Access to DDD Services Review

Submit the following to the DDD Intake Worker:

- Proof of enrollment in Higher education or trade school
 - Acceptance Letter
- Proof of Competitive Integrated Employment
 - Pay Stub

*Confirm approval for DDD early enrollment prior to accepting high school diploma.

Step By Step Process



DDD - Options Counseling

Individuals and families can schedule a 15- to 20-minute call or virtual meeting with a DDD Liaison to ask questions and discuss options.

To request a Options Counseling, reach out to the Office of Transition to Adult Life Helpdesk at DDD.TransitionHelpdesk@dhs.nj.gov or contact us at 609-808-3867.

Discover DDD: Family Guidance Day

Formally known as DDD Resource Day

During a DDD Family Guidance Day, schools can schedule 15- to 20-minute time slots for school personnel, students, and/or family members to meet one-on-one with a DDD staff member to ask questions and seek guidance and discuss options. DDD will work with schools to organize a transition or employment related Family Guidance Day.

FGS-can be held during or after school hours, virtually or in person. We encourage schools to hold Family Guidance Days bi-annually or quarterly, depending on student the needs.

To request a FGS, reach out to your DDD Liaison or visit the [Transition to Adult Life and Employment](#) webpage.

DDD Application Process

Steps to Accessing DDD Services

Eligibility Determination

- Steps 1, 2, & 3 are part of the intake and eligibility determination process.
- Step 4 is completed after a person is determined eligible, prior to accessing services.



Graduates Aging Out of School System



New Jersey Department of Human Services
Division of Developmental Disabilities

Graduates Aging Out of the School System: Accessing Adult Services from the NJ Division of Developmental Disabilities

A TIMELINE FOR STUDENTS EXITING SCHOOL AND TURNING 21

To be determined eligible for services all applicants must complete either the short or the full application

STEP 1 Apply for Medicaid Eligibility

- Information about Medicaid eligibility information can be found here: www.nj.gov/humanservices/ddd/individuals/applyservices/medicaid
- For additional help, email DDD_MedEligHelpdesk@dhs.nj.gov

STEP 2 Apply for DDD Eligibility

- Individuals can begin applying for DDD Eligibility any time after 18 years old
- Call the DDD Community Services Office closest to where you live and/or download the DDD Eligibility Application here: www.nj.gov/humanservices/ddd/individuals/applyservices

STEP 3 Complete NJ Comprehensive Assessment Tool (NICAT)

- As part of the application process, individuals will complete the NICAT with a DDD intake Worker, usually from the DDD Community Services Office closest to where they live. Learn about the NICAT here: www.nj.gov/humanservices/ddd/individuals/applyservices/assessment

STEP 4 Complete the Support Coordination Agency Selection Form

- When the individual is in their last year of receiving school-based services, the Support Coordination Agency Selection Form is completed and submitted. Research Support Coordination Agencies here: www.nj.gov/humanservices/ddd/assets/documents/individuals/support-coordination-agencies-list.pdf

SEPTEMBER – JUNE: Preparation and Planning

- Participate in webinars and activities offered about Transition Planning
 - Planning for Adult Life (www.planningforadultlife.org) offers monthly educational sessions for students with intellectual/developmental disabilities ages 16-21 and their families, and other resources, like:
 - Webinar Wednesdays – monthly webinars on transition-related topics
 - GOT PLANS? ONLINE LESSONS – a downloadable guide and fun instructional videos
- Participate in webinars offered by Division of Developmental Disabilities Office of Transition to Adult Life and Employment
 - DDD Welcome Sessions and Transition Thursdays are for people and families to learn about the transition process, including services available through DDD. To sign up for DDD Transition news and announcements, scan the QR code or email DDD_TransitionHelpdesk@dhs.nj.gov



NIDD Graduates Timeline: September 2023

Page 1 of 2

DDD Community Services

Flanders: 973-927-2600
Freehold: 732-863-4500
Mays Landing: 609-300-1898
Newark: 973-693-5080
Paterson: 973-977-4004
Plainfield: 908-226-7800
Trenton: 609-292-1922
Voorhees: 856-770-5900

- Explore person-centered planning tools to help individuals in identifying their vision for work and life and the supports needed to achieve this vision
 - To get started, review the DDD Person-Centered Planning Tool: www.nj.gov/humanservices/ddd/documents/person-centered-planning-tool.docx
 - Use Charting the Life Course tools during the person-centered planning process: www.lifecoursetools.com
- Learn about Support Coordination (Care Management)
 - Support Coordination is the care management model used by DDD to help people access DDD services and other needed medical, social and educational services. Learn more about Support Coordination here: www.nj.gov/humanservices/ddd/individuals/c/community/care
- Learn about Service Providers
 - Use the DDD Provider Search Database to find service providers in your area: <https://inrecord.dhs.state.nj.us/providersearch>

FEBRUARY/MARCH: Support Coordination Agency Selection

- Complete and submit the Support Coordination Agency Selection Form (STEP 4)
 - The individual's DDD Intake Worker will provide a Support Coordination Agency Selection Form during the eligibility application process. There is a better chance of getting a selected agency if the individual identifies both a first-choice and second-choice agency. There is an up-to-date list of Support Coordination Agencies here: www.nj.gov/humanservices/ddd/assets/documents/individuals/support-coordination-agencies-list.pdf
 - Return the completed Support Coordination Agency Selection Form to the DDD intake Worker who helped the individual with the eligibility application process.

APRIL: Support Coordination Agency Assignment

- DDD assigns the student to a Support Coordination Agency
 - DDD assigns all graduating students to a Support Coordination Agency, even if they turn 21 in June, based on the completed selection form and available capacity of the person's first-choice and second-choice agencies.
 - Once assigned, the Support Coordination Agency can receive funding to attend exit IEP and/or transition-related meetings at the school and begin working with the individual and family to develop the Individualized Service Plan (ISP).

APRIL – JUNE: Service Plan Development

- Develop the Individualized Service Plan
 - The Support Coordinator is responsible for writing the Individualized Service Plan (ISP), with guidance from the planning team (individual, family, providers, etc.) and information gathered during the person-centered planning process and completion of the NICAT.

Students Turning 21 July – March

- Ensure that STEP 1, STEP 2, and STEP 3 are complete
- 2-3 months before services are needed, reach out to the individual's DDD intake Worker to complete STEP 4.

NIDD Graduates Timeline: September 2023

Page 2 of 2

Access the DDD Application

- The Application for Eligibility is available on the DDD website:
www.state.nj.us/humanservices/ddd/services/apply/index.html
- Or, contact the DDD Community Services Office that serves the applicant's county of residence to have an application mailed to the person's home.
www.state.nj.us/humanservices/ddd/staff/cso/index.html

DDD Community Services Offices

Mays Landing Office

Counties Served:
Atlantic - Cape May -
Cumberland - Salem

Voorhees Office

Counties Served:
Burlington - Camden -
Gloucester

Trenton Office

Counties Served:
Hunterdon - Mercer -
Middlesex

Freehold Office

Counties Served:
Ocean - Monmouth

Plainfield Office

Counties Served:
Union - Somerset,

Newark Office

County Served:
Essex

Patterson Office

Counties Served:
Bergen - Hudson -
Passaic

Flanders Office

Counties Served: Morris
- Sussex - Warren

Contact us at 609-808-3867

DDD.TransitionHelpDesk@dhs.nj.gov



Available Transition Resources & Services

Office of Transition to Adult Life & Employment

Meet us at Events Across the New Jersey

Learn where we will be next or request DDD to provide and Exhibit Table at your next event by visiting our website at

<https://www.nj.gov/humanservices/ddd/individuals/transition/>

DDD Office of Transition To Adult Life & Employment (OT&E)

Participate in **OT&E** events and services. More information is available at <https://www.nj.gov/humanservices/ddd/individuals/transition/>

Current services include:

- **Transition Thursdays Webinar Series** – Monthly webinars on the 2nd and 3rd Thursday of the month related to accessing DDD services and transitioning into adult life.
- **Quarterly Welcome Session**– Quarterly welcome sessions to assist individuals and families in understanding what DDD has to offer and things to consider as you get started.
- **Options Counseling** – One-on-one opportunity to discuss questions around the transition process via phone, teams meeting, or in person.
- **Graduate Timeline** – a downloadable resource to help identify the 4 steps necessary to complete to be determined eligible for DDD Services

Transition Thursdays

Webinar Series



Scan our QR code
with your phone camera to
join our listserv!

Contact us at 609-808-3867

DDD.TransitionHelpDesk@dhs.nj.gov

1st Thursday - Quarterly

Welcome Session - General
Noon – 1PM

2nd Thursday - Monthly

Intake Process & Transition
Resources
6PM – 7:30 PM

3rd Thursday - Monthly

Topic of the Month
Noon – 1PM

4th Thursday - Quarterly

Welcome Session (with Breakouts)
6PM – 7:30 PM

Quarterly

September | January | April | July

Monthly

Thank you!

The Office of Transition to Adult Life
and Employment

Contact us at 609-808-3867

DDD.TransitionHelpdesk@dhs.nj.gov



Scan our QR code
with your phone camera to
join our listserv!